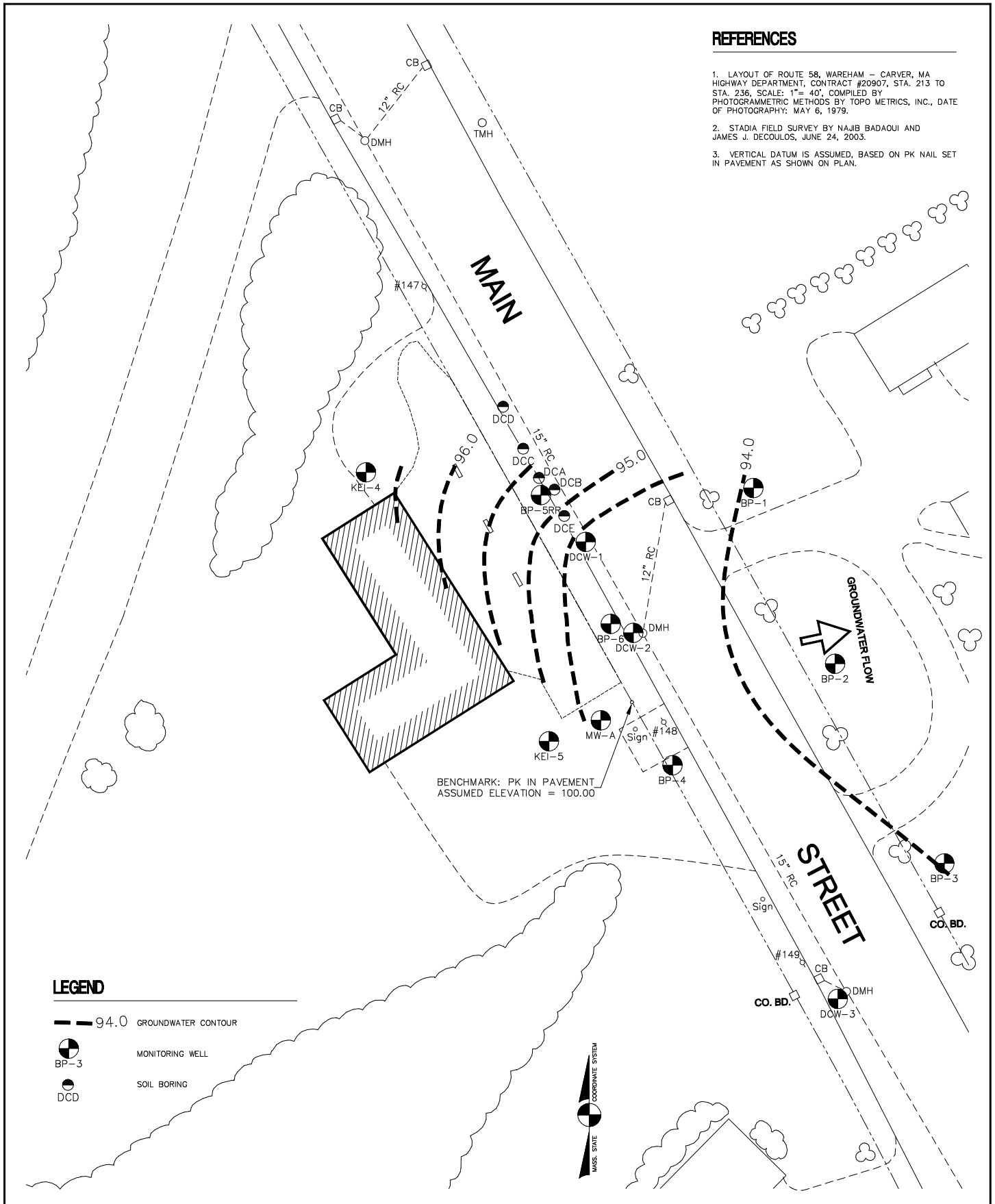


REFERENCES

1. LAYOUT OF ROUTE 58, WAREHAM - CARVER, MA HIGHWAY DEPARTMENT, CONTRACT #20907, STA. 213 TO STA. 236, SCALE: 1"= 40', COMPILED BY PHOTOGRAMMETRIC METHODS BY TOPO METRICS, INC., DATE OF PHOTOGRAPHY: MAY 6, 1979.
2. STADIA FIELD SURVEY BY NAJIB BADAQI AND JAMES J. DECOULOS, JUNE 24, 2003.
3. VERTICAL DATUM IS ASSUMED, BASED ON PK NAIL SET IN PAVEMENT AS SHOWN ON PLAN.



DECOULOS & COMPANY
 3 ELECTRONICS AVE, DANVERS, MA 01923
 WWW.DECOULOS.COM
 617.489.7795

EXISTING SITE PLAN EAGLE GAS STATION CARVER, MASSACHUSETTS

DATE
 JUNE 2003
 SCALE
 1"= 40'
 FIGURE NO.
 4